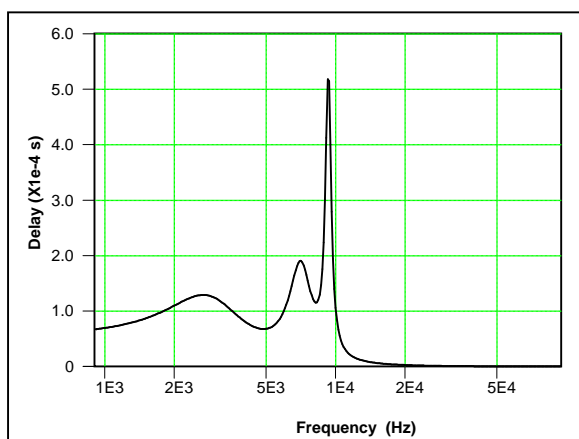
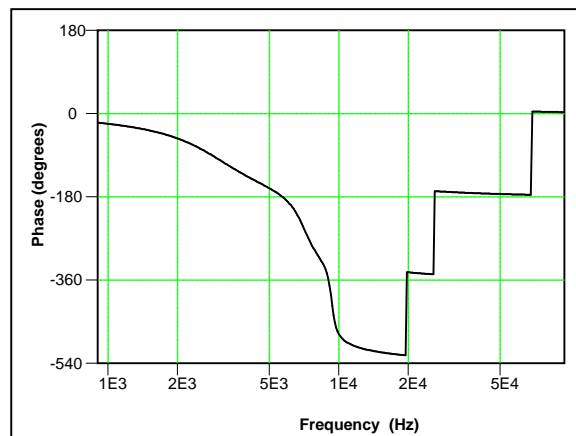
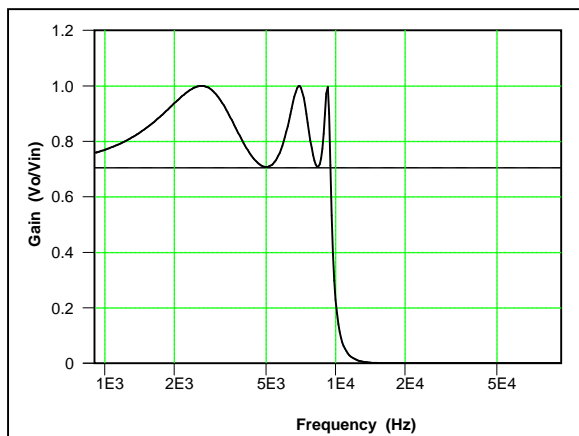


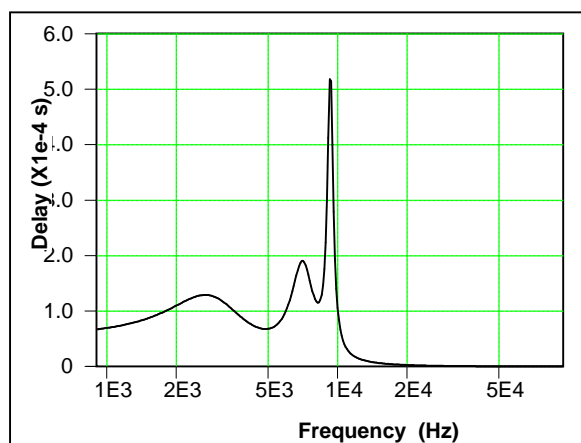
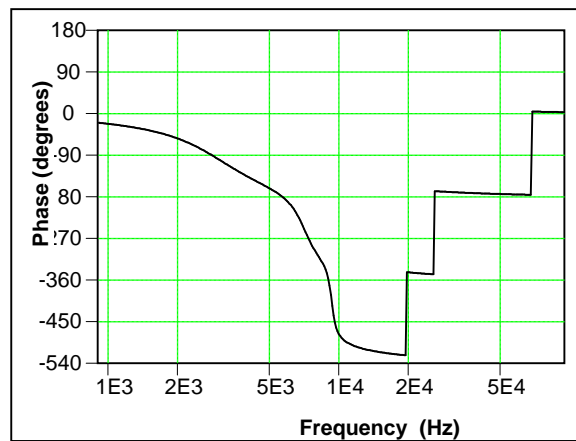
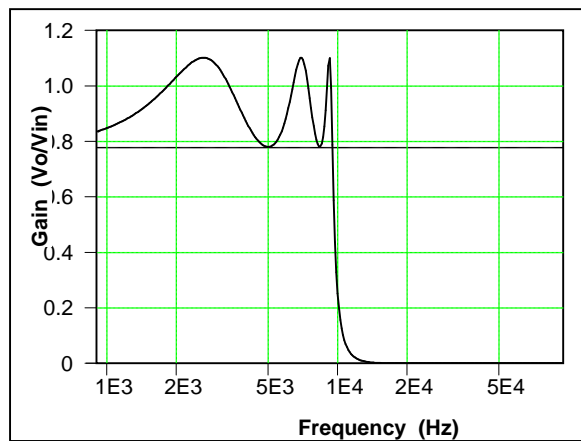
Elliptic Lowpass Filter N=6 Ideal Response

Passband attenuation: 3.000 dB
Passband edge frequency: 9.9 KHz



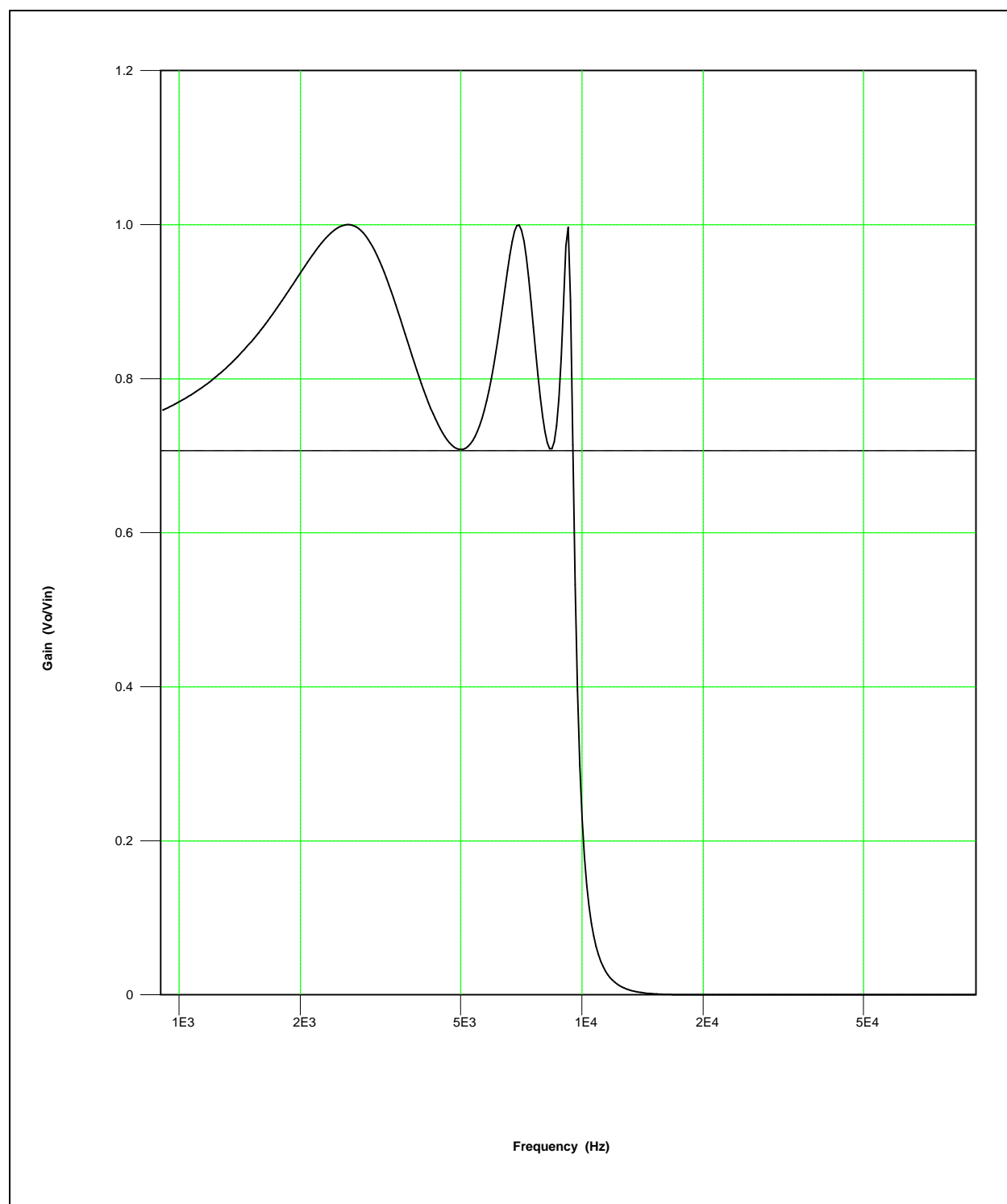
Elliptic Lowpass Filter N=6 Final Response

Passband attenuation: 3.000 dB
Passband edge frequency: 9.9 KHz



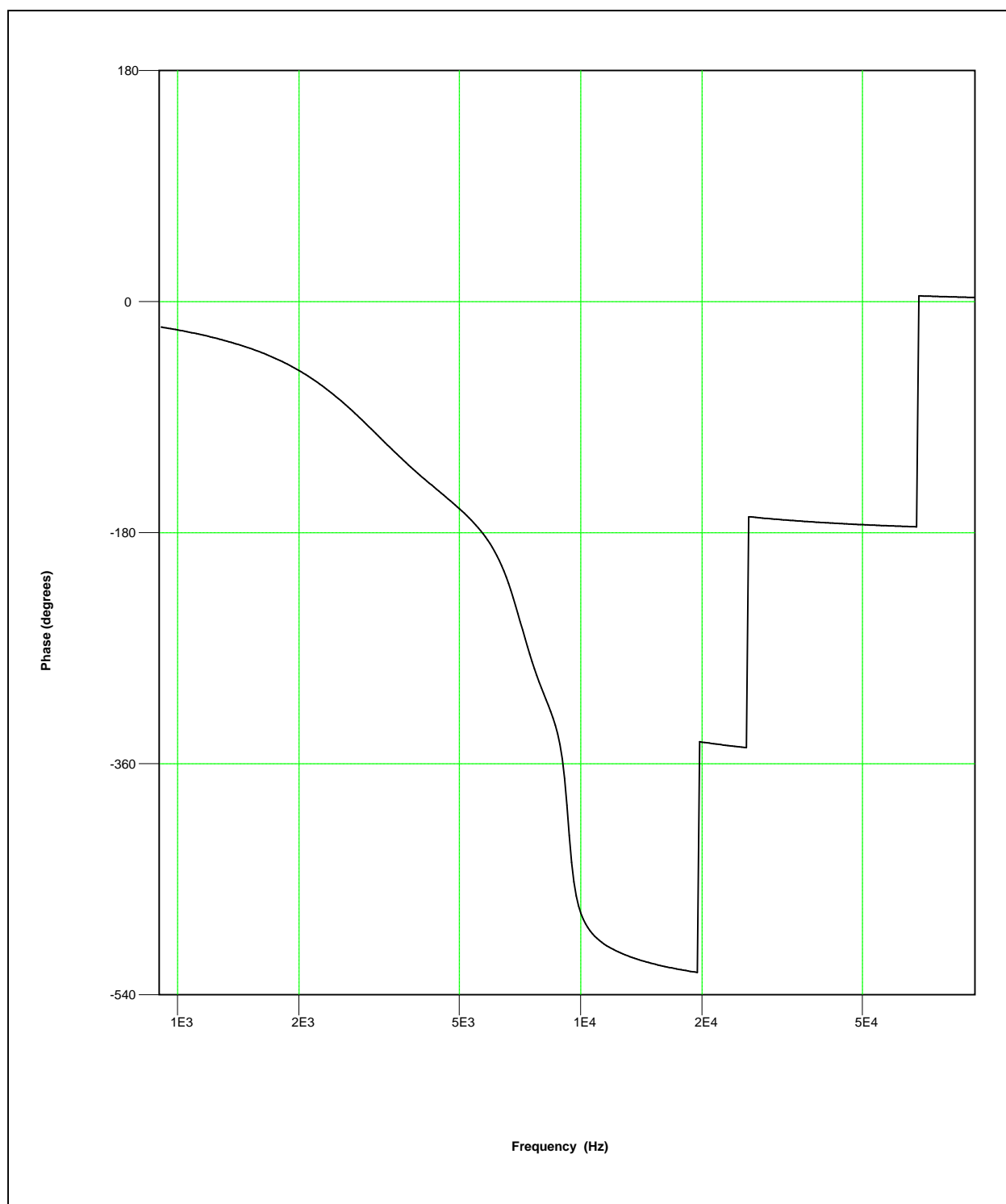
Elliptic Lowpass Filter N=6 Ideal Response

Passband attenuation: 3.000 dB
Passband edge frequency: 9.9 KHz



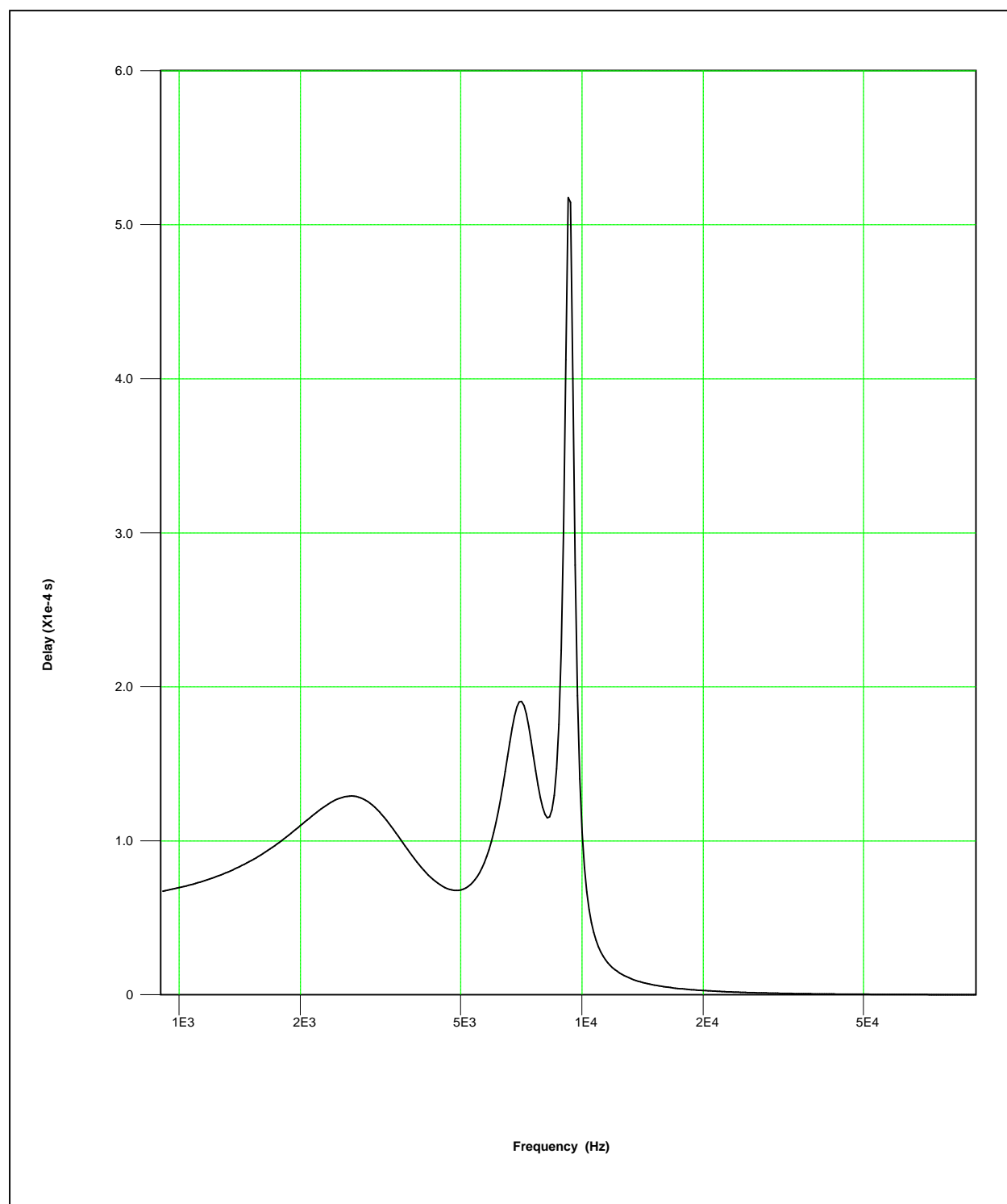
Elliptic Lowpass Filter N=6 Ideal Response

Passband attenuation: 3.000 dB
Passband edge frequency: 9.9 KHz



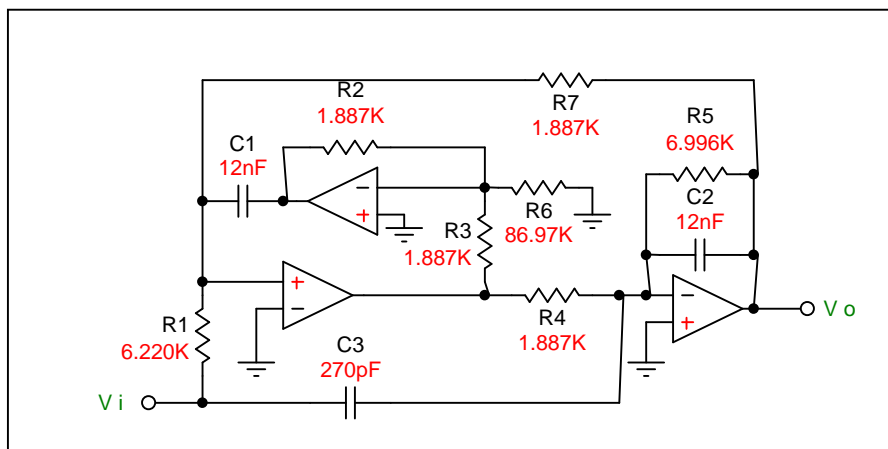
Elliptic Lowpass Filter N=6 Ideal Response

Passband attenuation: 3.000 dB
Passband edge frequency: 9.9 KHz

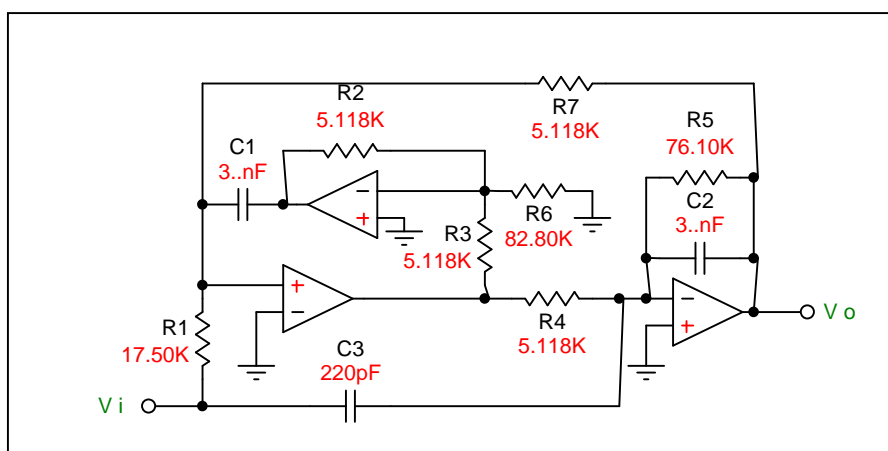


Elliptic Lowpass Filter N=6

Stage 1 of 3: Akerberg-Mossberg (AM) Second Order Lowpass Notch



Stage 2 of 3: Akerberg-Mossberg (AM) Second Order Lowpass Notch



Elliptic Lowpass Filter N=6

Stage 3 of 3: Akerberg-Mossberg (AM) Second Order Lowpass Notch

